

GREEN COLLAR FUTURES: GUILD NETWORKS

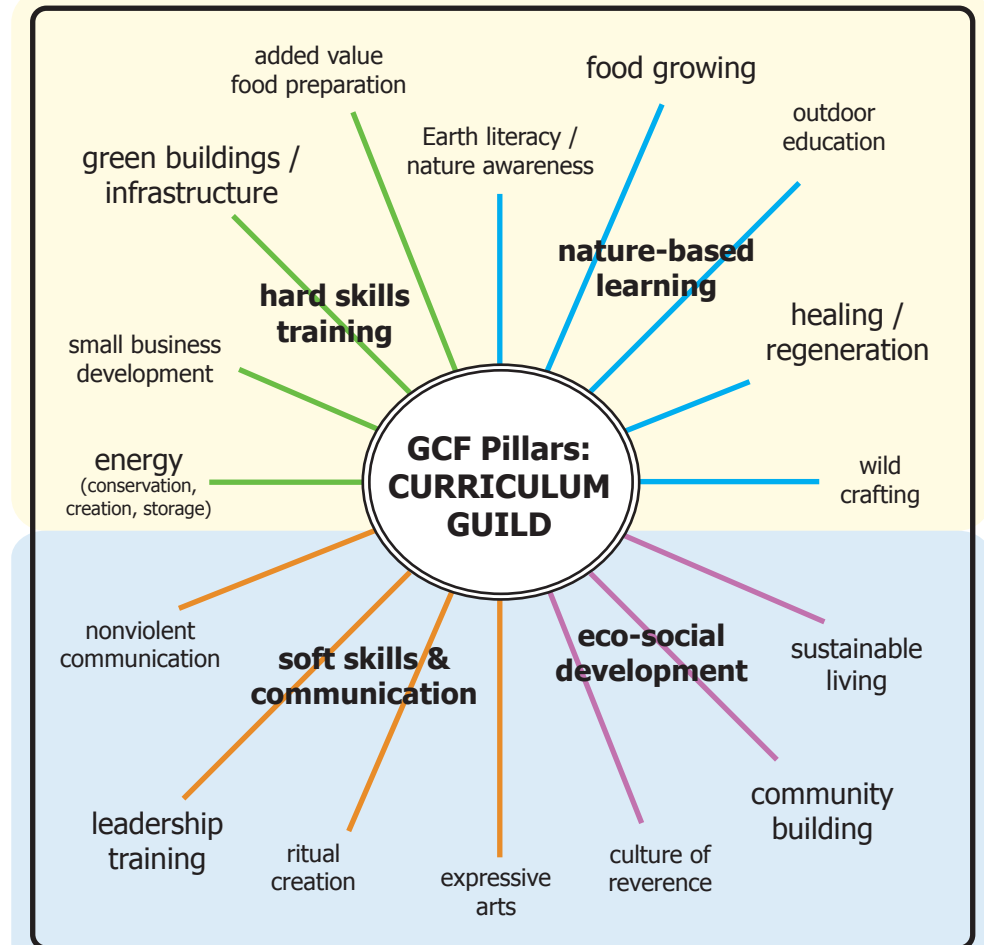
Guilds are groups of mutually supporting entities that fill a wide range of niches in any (eco)system. Together they form an open, but still largely self-reliant and self-sufficient whole system. Below are the guilds that (left) support & (right) comprise the Green Collar Futures service program.

2) GCF System Inputs (Value Chain Partners)



The key features of this support guild include a balanced, broad base of contributing partners, and bi-directional energy flows -- even though this is a 'support guild'. The nature of guilds are such that the primary member supported always returns some portion of the energy -- in altered, or value-added form, directly back to the system as new solutions.

3) GCF System Outputs (Yields)



Offered this broad spectrum of inputs, Green Collar Futures transforms them into its program guild above, which forms the keystone in the local economy noted earlier. This represents a strengthening, attained through increased connectivity, toward the formation of what may be called a node of permanence -- a network so solid it may not easily be taken down.